



Extra Heavy Loads

42" x 42" (106.7cm x 106.7cm)

4 Runners - 4 Way (V10)

Top: Triplewall
Bottom: Triplewall



Note: Photos depict a 48"x40" (121.9 x 101.5 cm) pallet.
See Page 02 for the exact location and specifications of the design of this specific pallet.

THE CORRUGATED PALLETS COMPANY

Unit 3 - 1750 The Queensway Suite 515
Toronto, ON M9C 5H5

FOR INFORMATION CONTACT

USA: 416-301-7555

mike@corrugatedpallets.com

Canada: 416-823-2999

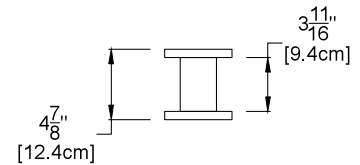
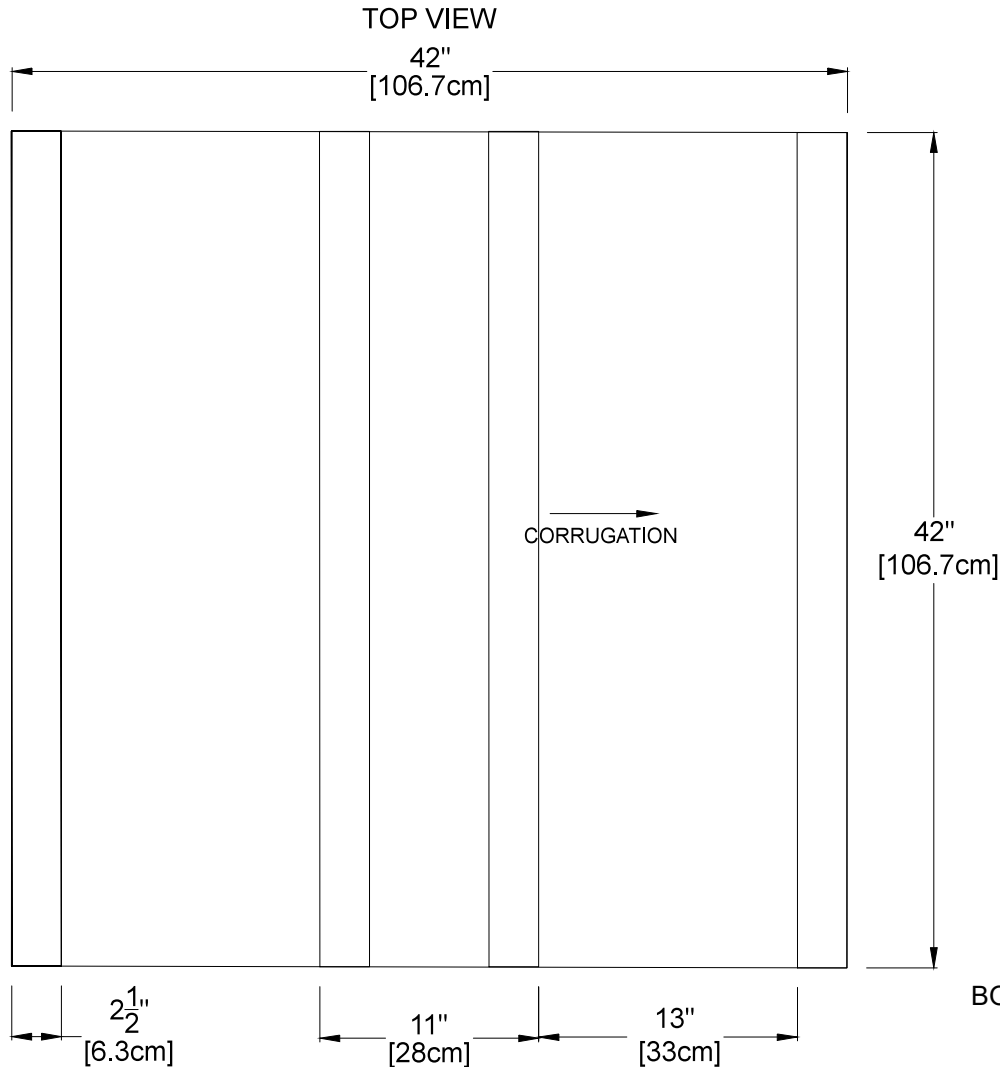
chris@corrugatedpallets.com



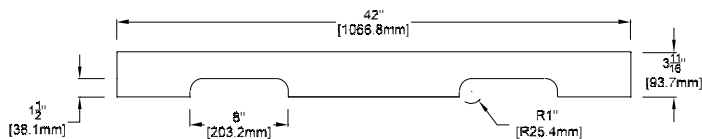
Extra Heavy Loads

42" x 42" (106.7cm x 106.7cm)

4 Runners - 4 Way (V10)



4-WAY RUNNER SPECIFICATIONS



PALLET ENDVIEW SHOWING OVERALL HEIGHT AND MATERIAL HANDLING EQUIPMENT CLEARANCES

THE CORRUGATED PALLETS COMPANY

Unit 3 - 1750 The Queensway Suite 515
Toronto, ON M9C 5H5

FOR INFORMATION CONTACT

USA: 416-301-7555 mike@corrugatedpallets.com
Canada: 416-823-2999 chris@corrugatedpallets.com

