



Extra Heavy Loads

48" x 42" (121.92 cm x 106.7 cm)

4 Runners - 4 Way (V10)

Top: Triplewall
Bottom: Triplewall



Note: Photos depict a 48"x40" (121.9 x 101.5 cm) pallet.
See Page 02 for the exact location and specifications of the design of this specific pallet.

THE CORRUGATED PALLETS COMPANY

Unit 3 - 1750 The Queensway Suite 515
Toronto, ON M9C 5H5

FOR INFORMATION CONTACT

USA: 416-301-7555

mike@corrugatedpallets.com

Canada: 416-823-2999

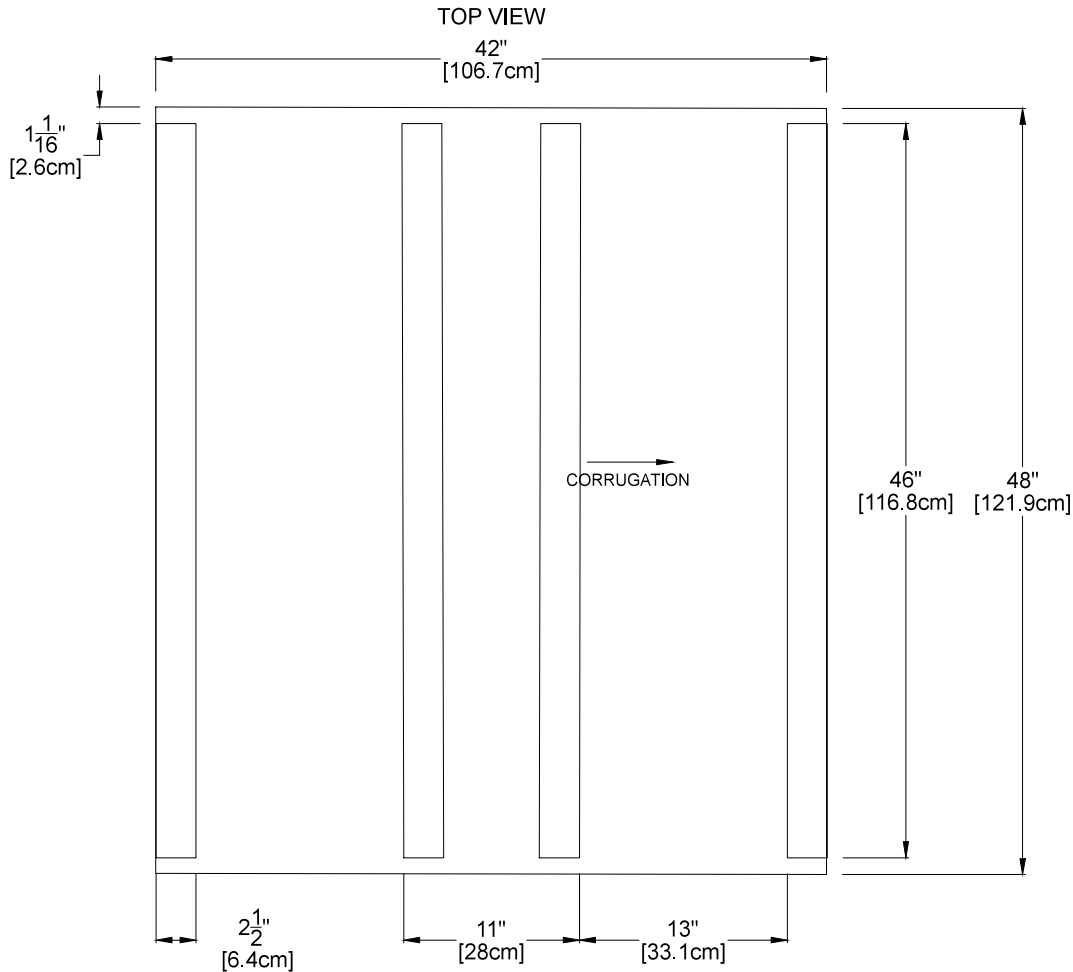
chris@corrugatedpallets.com



Extra Heavy Loads

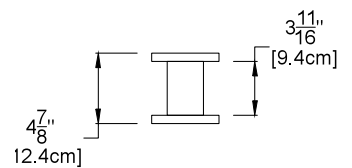
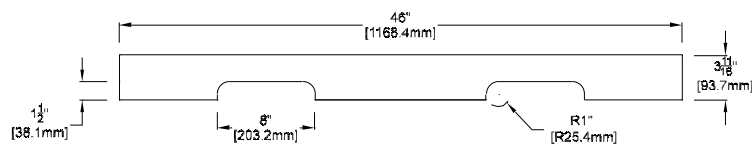
48" x 42" (121.92 cm x 106.7 cm)

4 Runners - 4 Way (V10)



TOP: TRIPLEWALL
BOTTOM: TRIPLEWALL

4-WAY RUNNER SPECIFICATIONS



PALLET END VIEW SHOWING OVERALL HEIGHT AND MATERIAL HANDLING EQUIPMENT CLEARANCES

THE CORRUGATED PALLETS COMPANY

Unit 3 - 1750 The Queensway Suite 515
Toronto, ON M9C 5H5

FOR INFORMATION CONTACT

USA: 416-301-7555 mike@corrugatedpallets.com
Canada: 416-823-2999 chris@corrugatedpallets.com



Extra Heavy Loads

48" x 42" (121.92 cm x 106.7 cm)

4 Runners - 4 Way (V10)

PALLET INFORMATION

TOP SHEET	TRIPLEWALL
BOTTOM SHEET	TRIPLEWALL
RUNNERS	4
RUNNER DESIGN	4-WAY
BUNDLE AMOUNT	11
STACK AMOUNT	22
PALLETS INTER-STACKED	NO
PALLET WEIGHT (LBS)	17
WATER RESISTANT COATING	
PALLET JACK ACCESSIBLE	NO
STATIC LOAD (LBS)*	< 5,000
RACKING LOAD (LBS)*	< 1,600
LEAD TIME	7 DAYS
ORDER QUANTITY	88
ORDER QUANTITY	176
ORDER QUANTITY	352
ORDER QUANTITY	660

QUOTE PER PALLET

General Terms and Conditions

The Customer confirms its agreement with the following standard terms of sale in every transaction with The Corrugated Pallets Company:

- There is no warranty for merchantability or fitness for purpose of the goods; rather, such warranties are expressly excluded.
- The Customer acknowledges that cardboard can fail, particularly if it is used in a way other than how the product was stress tested.
- In no event shall The Corrugated Pallets Company be liable for any consequential damages suffered by the Customer.
- The liability of The Corrugated Pallets Company for any losses suffered by the Customer shall in no event exceed the contract price.
- The Customers shall ensure that the loads shall be uniformly distributed on the pallet deck sheet.
- Actual load capacity is load specific and dependent on the general environment, product and packaging used to contain the subject load on the pallet.
- The testing of a TCPC pallet with the intended end use application is strongly recommended.
- Figures provided are based on internal pallet tests done by TCPC in 2014. Figures are subject to change based on specific end user performance. Static and Racking load performance is subject to testing by end user.
- Truckload quantities are based on a 53' truck.
- The pallet weight figure is an approximate figure.
- Tolerances on all drawings are +/- 3/4" unless otherwise specified.
- Runners are printed with corrugatedpallets.com.
- Pallets are shipped in bundles. Two bundles per stack. For orders of 4 or 8 stacks, bundles are secured with two nylon straps.
- For orders greater than half a trailer, pallets are not banded with two nylon straps.
- Pricing on this product is impacted by changes in paper commodity costs and is subject to change when our suppliers of linerboard and medium adjust their costs. A minimum of 30 days notice will be provided should market conditions change.
- Orders may vary +/- 10%.
- The parties irrevocably attorn to the laws of the Province of Ontario and any dispute arising between them shall be settled by arbitration to be held in Toronto, Ontario.

For more information, visit Terms & Conditions at: <http://corrugatedpallets.com/en/terms-conditions/>

THE CORRUGATED PALLETS COMPANY

Unit 3 - 1750 The Queensway Suite 515
Toronto, ON M9C 5H5

FOR INFORMATION CONTACT

USA: 416-301-7555 mike@corrugatedpallets.com
Canada: 416-823-2999 chris@corrugatedpallets.com